

# Hillsborough County hurricane evacuation map

## Shelters in Hillsborough County

- 2 Lockhart Elementary School, 3719 N 17th St., Tampa
- 3 McKittrick Elementary School, 5503 Lutz Lake Fern Road, Lutz
- 4 Chiles Elementary School, 16541 W Tampa Palms Blvd., Tampa
- 5 •Middleton High School, 4801 N 22nd St., Tampa
- 7 Cimino Elementary School, 4329 Culbreath Road, Valrico
- 8 •Sickles High School, 7950 Gunn Highway, Tampa
- 10 Bloomingdale High School, 1700 E Bloomingdale Ave., Valrico
- 11 •Pizzo Elementary School, 11701 Bull Run Drive, Tampa
- 12 Marshall Middle School, 18 S Maryland Ave., Plant City
- 13 Heritage Elementary School, 18201 E Meadows Road, Tampa
- 14 •Tomlin Middle School, 501 N Woodrow Wilson St., Plant City
- 15 Memorial Middle School, 4702 N Central Ave., Tampa
- 16 Crestwood Elementary School, 7824 N Manhattan Ave., Tampa
- 17 Turkey Creek Middle School, 5005 S Turkey Creek Road, Plant City
- 18 •Lake Magdalene Elementary School, 2002 Pine Lake Drive, Tampa
- 19 Wharton High School, 20150 Bruce B. Downs Blvd., Tampa
- 20 Nelson Elementary School, 5413 Durant Road, Dover
- 21 Schmidt Elementary School, 1250 Williams Road, Brandon
- 23 Randall Middle School, 16510 Fish Hawk Blvd., Lithia
- 24 •Sessums Elementary School, 11525 Ramble Creek Drive, Riverview
- 25 Walker Middle School, 8282 N Mobley Road, Tampa
- 26 Jennings Middle School, 8799 Williams Road, Seffner
- 27 Benito Middle School, 10101 Cross Creek Blvd., Tampa
- 28 Mulrennan Middle School, 4215 Durant Road, Valrico
- 29 Newsome High School, 16550 Fish Hawk Road, Lithia
- 30 Sligh Middle School, 2011 E Sligh Ave., Tampa
- 31 Sulphur Springs Elementary School, 8412 N 13th St., Tampa
- 34 Williams Middle School, 5020 N 47th St., Tampa
- 35 Young Middle School, 1807 E Dr. Martin Luther King Blvd., Tampa
- 36 Limona Elementary School, 1115 E Telfair Road, Brandon
- 37 •Burnett Middle School, 1010 N Kingsway Road, Seffner
- 38 McLane Middle School, 306 N Knights Ave., Brandon
- 39 Valrico Elementary School, 609 S Miller Road, Valrico
- 40 •Cypress Creek Elementary School, 4040 19th Ave. NE, Ruskin
- 41 Robinson Elementary School, 4801 S Turkey Creek Road, Plant City
- 43 Bevis Elementary School, 5720 Osprey Ridge Blvd., Lithia
- 44 Robles Elementary School, 4405 E Sligh Ave., Tampa
- 45 Pride Elementary School, 18271 Kinnan St., Tampa
- 46 Rodgers Middle School, 11910 Tucker Road, Riverview
- 47 Wilson Elementary School, 702 English St., Plant City
- 48 Greco Middle School, 6925 E Fowler Ave., Temple Terrace
- 9 Ippolito Elementary School, 6874 S Falkenburg Road, Riverview
- 50 •Bryant Elementary School, 13910 Nine Eagles Blvd., Tampa
- 51 Muller Elementary School, 13615 N 22nd St., Tampa
- 52 Bowers Whitley Career Center, 13609 N 22nd St., Tampa
- 60 Durant High School, 4748 Cougar Place, Plant City
- 61 Plant City High School, 1 Raider Path, Plant City
- 72 •# Church of Jesus Christ L.D.S., 8020 N Gunn Highway, Tampa

- shelters with this designation will be the only shelters to open in a county-declared "partial opening scenario"
- # shelters with this designation will not open for Category 4 or 5 hurricanes

## Warning

Red Cross public shelters are indicated on the map and cross referenced by number on this page. Public shelter spaces are extremely limited so shelters may fill up quickly during an evacuation. In addition, shelters provide an austere living environment. Those who need to evacuate should make every effort to afford themselves of some protected location other than public shelter. This may include homes of friends/relatives who do not have to be evacuated, hotels/motels in safe areas, or depart the county to a safer location.

Under a major storm scenario, it may become necessary to open refuges to accommodate evacuees. These facilities have not been fully certified as Red Cross shelters and may not have the extent of services available at Red Cross Shelters.

All residents looking for refuge from a storm should tune in to local television and radio stations for updated information. Announcements will be made confirming shelter openings and alternate refuges, if necessary.

## Special needs shelters

Hillsborough County provides a shelter program for those residents requiring special medically related care. Special needs shelters will be available for people requiring more skilled medical care than available in a regular shelter but not requiring an acute care facility such as a hospital. If this type of extended care is needed, contact the Emergency Operations Center, 272-6900, to be considered for registration.

## Reduced shelter scenarios

For major hurricanes threatening Hillsborough County, all shelters listed are projected to be opened.

## Important phone numbers

- American Red Cross .....348-4820
- Hillsborough Info Line .....272-5900
- Hillsborough Emergency Management .....272-6900
- (TDD) .....276-2395
- Hillsborough Co. Building Department
- (Building permits/inspections) .....272-5600
- In emergencies for police, fire or ambulance dial 911
- CALL 911 IN EMERGENCIES ONLY.**

Under other scenarios (such as certain hurricanes on the lower end of the intensity scale), a reduced number of shelters will be opened. All, or a portion of, those shelters indicated by a • will be opened under reduced shelter scenarios. Shelters designated by a # will not open for a Category 4 or 5 hurricane.

## The evacuation plan

The colored areas on this map are vulnerable to storm surge. Storm surge is salt water flooding which rushes over coastal and river areas near where the eye of the hurricane strikes, destroying homes and businesses in its path. The majority of deaths as a direct result of hurricanes are caused by drowning from flooding.

Hurricanes are categorized on a scale of one to five depending on the strength of the winds. Storm surge can reach 7 feet above sea level in a Category 1 hurricane to as much as 28 feet above sea level in a Category 5 hurricane. Depending on the track and strength of a threatening hurricane, local officials may order one of five evacuation levels.

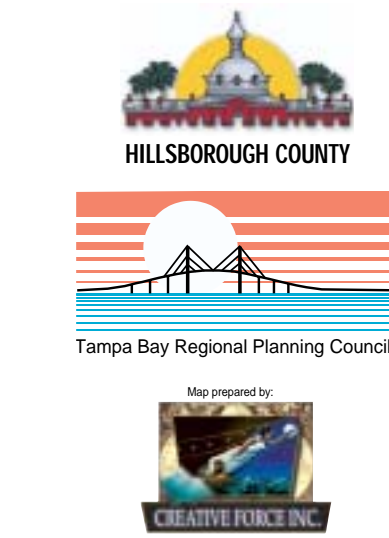
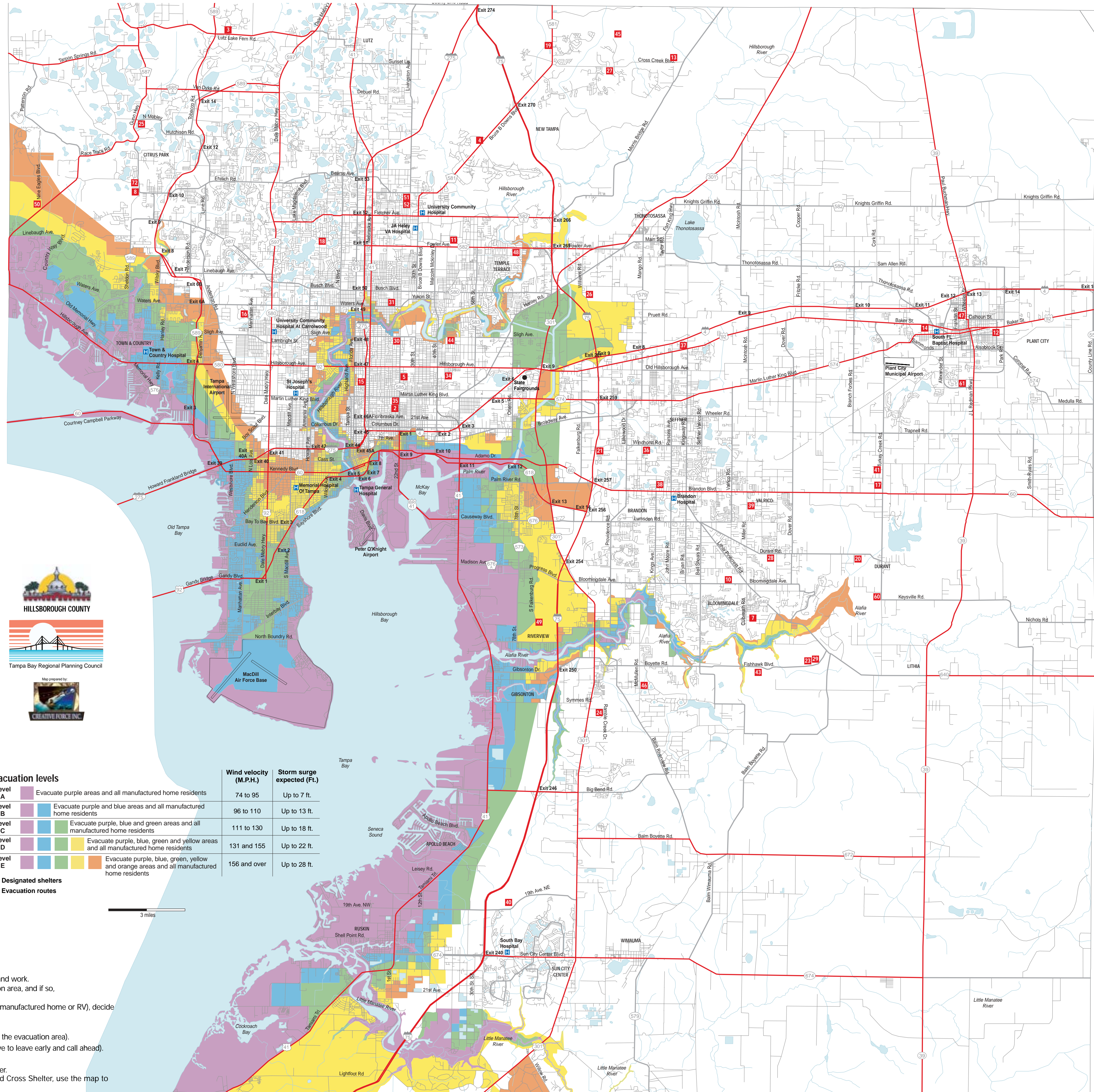
These are called Evacuation Levels A, B, C, D and E (see legend). These levels correspond to the flooding which is likely to occur from the five categories of hurricanes.

If you live in a mobile home, manufactured home or recreational vehicle, you must evacuate at all evacuation levels regardless of where you are located. These structures are extremely vulnerable to hurricane winds.

If you live in an area ordered to evacuate or in a mobile home, manufactured home or RV, gather your emergency supplies, secure your home and leave immediately. Failure to obey an evacuation order is a violation of Florida law.

## How to use this map

1. Refer to the map to locate where you live and work.
2. Determine whether you are in an evacuation area, and if so, what level (color).
3. If you are in an evacuation area (or mobile/manufactured home or RV), decide now where you will go if ordered to evacuate. Your choices include:
  - The home of a friend or relative (outside the evacuation area).
  - A hotel or motel (remember you will have to leave early and call ahead).
  - Leave the area entirely.
  - As a last resort, go to a Red Cross Shelter.
4. If you decide you will have to go to a Red Cross Shelter, use the map to decide which one will be convenient.



Evacuation levels	Wind velocity (M.P.H.)	Storm surge expected (Ft.)
Level A: Evacuate purple areas and all manufactured home residents	74 to 95	Up to 7 ft.
Level B: Evacuate purple and blue areas and all manufactured home residents	96 to 110	Up to 13 ft.
Level C: Evacuate purple, blue and green areas and all manufactured home residents	111 to 130	Up to 18 ft.
Level D: Evacuate purple, blue, green and yellow areas and all manufactured home residents	131 and 155	Up to 22 ft.
Level E: Evacuate purple, blue, green, yellow and orange areas and all manufactured home residents	156 and over	Up to 28 ft.

- 1 Designated shelters
- Evacuation routes

